

Investment philosophy

The objective of the fund is to preserve capital. The Fund invests primarily in fixed income and money instruments for which the remaining period to maturity does not exceed 2 years for each investment. As a minimum, two thirds of its assets will be denominated in euro, and the majority of the portfolio positions will have an investment grade rating.

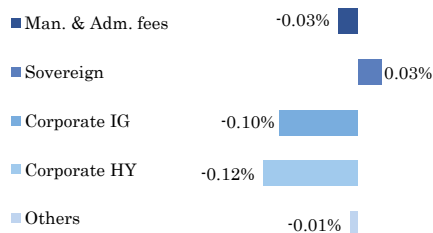
Return & risk metrics *(data since October 2011)*

| | |
|------------------------|--------|
| NAV price | 170.15 |
| Cumulative return | 3.7% |
| Annualised return | 0.5% |
| Best month | 0.6% |
| Worst month | -0.5% |
| Volatility | 0.6% |
| Sharpe ratio | 0.7 |
| Value At Risk (95%,1M) | -0.3% |
| Fund yield | 0.5% |
| Fund duration | 0.6 |
| Total position | 62 |

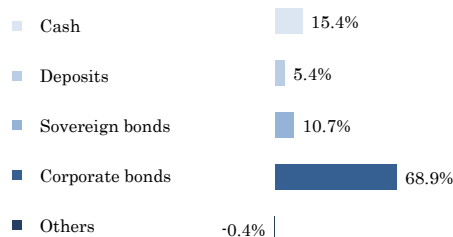
Top holdings

| | |
|----------------------------------|------|
| BAT INTL FINANCE 0.375% 2019 | 3.6% |
| VOLKSWAGEN 0.032% 2019 | 3.6% |
| DEUTSCHE BANK AG 0.232% 2019 | 3.6% |
| MUNICH ENHANCED YIELD | 3.1% |
| EASTERN CREATION II 1.5000% 2019 | 3.0% |

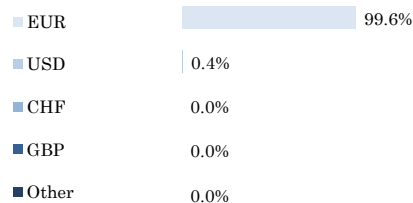
Monthly performance contribution



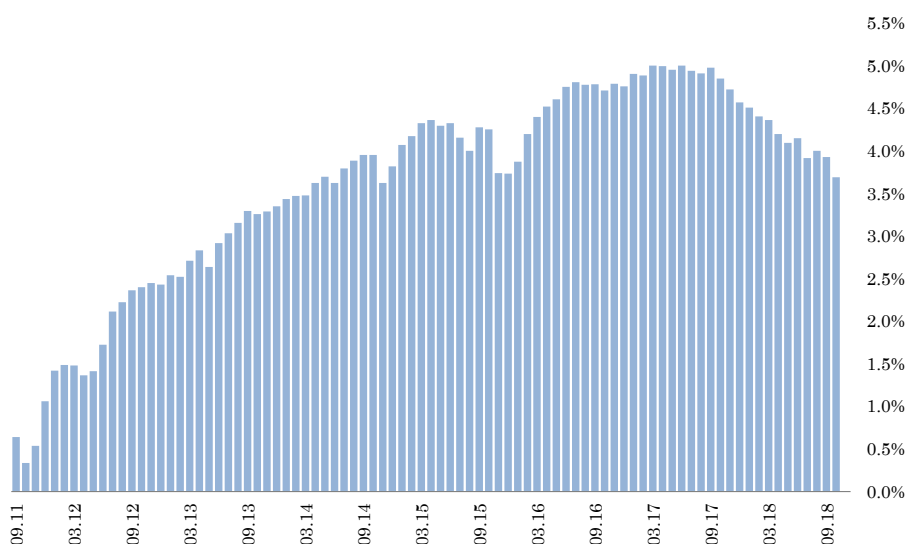
Asset Allocation



Currencies



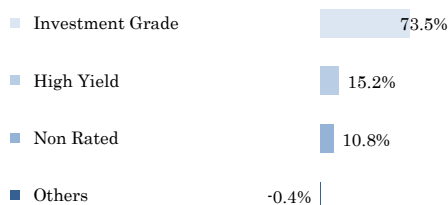
Cumulative net return



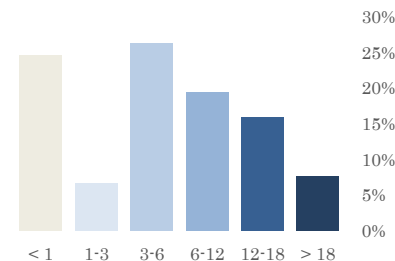
Monthly Returns

| | Jan | Feb | Mar | Apr | May | Jun | Jul | Aug | Sep | Oct | Nov | Dec | YTD |
|------|--------|--------|--------|--------|--------|--------|--------|--------|--------|--------|--------|--------|--------|
| 2011 | | | | | | | | | | 0.64% | -0.30% | 0.20% | 0.54% |
| 2012 | 0.52% | 0.36% | 0.07% | -0.01% | -0.11% | 0.05% | 0.31% | 0.38% | 0.11% | 0.14% | 0.04% | 0.05% | 1.90% |
| 2013 | -0.02% | 0.11% | -0.02% | 0.18% | 0.12% | -0.19% | 0.27% | 0.11% | 0.12% | 0.14% | -0.04% | 0.03% | 0.82% |
| 2014 | 0.06% | 0.08% | 0.04% | 0.01% | 0.14% | 0.07% | -0.07% | 0.16% | 0.09% | 0.06% | 0.00% | -0.32% | 0.32% |
| 2015 | 0.19% | 0.24% | 0.10% | 0.15% | 0.04% | -0.06% | 0.03% | -0.16% | -0.15% | 0.26% | -0.02% | -0.49% | 0.11% |
| 2016 | -0.01% | 0.14% | 0.31% | 0.19% | 0.12% | 0.08% | 0.14% | 0.05% | -0.03% | 0.01% | -0.07% | 0.08% | 1.01% |
| 2017 | -0.03% | 0.14% | -0.02% | 0.11% | -0.01% | -0.04% | 0.05% | -0.06% | -0.03% | 0.06% | -0.12% | -0.12% | -0.06% |
| 2018 | -0.15% | -0.06% | -0.10% | -0.04% | -0.16% | -0.10% | 0.05% | -0.22% | 0.08% | -0.07% | -0.23% | | -0.98% |

Ratings



Maturity schedule (in months)



General information

| | | | |
|-----------------|--------------------------------|-----------|------------------------|
| ISIN | LU0041782896 | Custodian | BDL, Luxembourg |
| Bloomberg | PLEECRI LX | Adm. | EFA, Luxembourg |
| Liquidity | Weekly (cut off Wednesday 6pm) | Auditor | KPMG Audit, Luxembourg |
| Management fees | 0.30% | Type | UCITS |

Disclaimer

The material presented above are provided to you at your request and informational purposes only. This material is for your private information only and we are not soliciting any action based upon it. It is not to be construed as an offer to sell or the solicitation of an offer to buy any investment product.

The market valuation, terms and calculations contained herein are estimates only. Over time, there may be changes to the information currently supplied in this document. We take no responsibility for amending or correcting any previously supplied information.

This document is based upon information that we consider reliable, but we do not represent that it is accurate or complete, and it should be relied upon as such. Past performance is not indicative of future results.

Information for investors in Switzerland

The state of the origin of the Fund is Luxembourg.

The Representative in Switzerland is ACOLIN Fund Services AG, Affolternstrasse 56, CH-8050 Zurich.

The Paying Agent is CBH - Compagnie Bancaire Helvétique S.A., boulevard Emile-Jaques-Dalcroze 7, CH-Geneva.

The prospectus, the statutes, the key investor information as well as the annual and semi-annual reports may be obtained free of charge at the registered office of the Swiss Representative.

The current document is intended for information purposes only and shall not to be used as an offer to buy and/or sell shares. In case where the performance data are included in the current document, past performance is no indication of current or future performance. The performance data do not take account of the commissions and costs incurred on the issue and redemption of units.